



MANTIS WORLD 2019



★**SUPERSTAR**
mantis
one

mantis

INDEX Green text - Features Organic Cotton

											
M68 p04	M69 p05	M71 p43	M72 p50	M73 p14	M74 p15	M76 p12	M77 p56	M78 p11	M79 p11	M80 p33	M81 p32
											
M82 p53	M83 p16	M84 p17	M85 p05	M86 p09	M88 p06	M89 p10	M91 p31	M92 p49	M96 p39	M97 p44	M99 p42
											
M104-TLC p46	M109S p34	M110S p35	M113 p55	M114 p46	M116 p50	M118 p45	M119 p37	M120 p47	M121 p60	M123 p40	M124 p40
											
M125 p52	M126 p42	M127 p51	M128 p58	M129 p36	M130 p20	M131 p24	M132 p22	M133 p21	M135 p24	M136 p23	M140 p61
											
M142 p54	M147 p30	M175 p08	M176 p13	M177 p02	M178 p07	M191 p28	M192 p29	M193 p38	M194 p57	M195 p62	M196 p63

WELCOME TO MANTIS WORLD 2019.

We've been in the business of producing garments for decoration since the turn of the century; selecting great fabrics and designing styles we believe in. For us it's about being mindful about what we do, realising that we've got an opportunity to make a difference and to ensure that what we make is done in the best possible way for the workers involved and the planet around us. We've promised to use only sustainable forms of cotton throughout our ranges by 2021; to do what we can to reduce the amount of potentially harmful pesticides and chemicals so prevalent in the growing of conventional cotton and that result in harm to the earth and the health of the cotton farmers.

For 2019 we've got new styles and colours across our Superstar, Mantis and One ranges – all developed using organic cotton. And, understanding that polyester is fundamentally a plastic, we're replacing much of our standard polyester with recycled.



M177

Superstar Henley T
with Organic Cotton

3 Button Placket / Premium, Peach-Feel Fabric / Crew Neck
With Ribbed Binding / Curved Hem / Raglan Styling /
Modern Fit / Tear-Off label

100% Organic Cotton (Charcoal Grey Melange: 60% Organic
Cotton, 40% Polyester) / Peach-Finish Single Jersey / 150gsm

S, M, L, XL



certified by Control Union
certification CU811271

CHARCOAL
GREY MELANGE



Black

Pure White

Charcoal Grey Melange



★ SUPERSTAR

A capsule collection of premium quality classic styles with a supersoft twist, Superstar is all about seeing the attention to detail and really feeling the difference. Responsibly produced with care and carefully crafted to stand test of time, all garments feature tear-off labels as standard throughout the range to make total personalisation as easy as possible. Many of our Superstar styles or colours are already in organic cotton, and plans are in place to swap the rest over to being wholly sustainable as part of our 2021 pledge cos we believe it's the right thing to do.



M68

Men's Superstar T

Modern Fit T / Soft-Handle Peach Finish Fabric / 1X1 Rib Neck / Grin Stitch At Sleeve Ends And Hem / Tear-Off Label

100% Cotton (Heather Grey Melange: 90% Cotton, 10% Viscose; Charcoal Grey Melange: 60% Cotton, 40% Polyester); Forest Green, Dark Navy, Soft Pink & Surf Blue: 100% Organic Cotton / Style In Transition To Organic Cotton / Peach Finish Single Jersey / 150gsm

S,M,L,XL,XXL,XXXL
(*AVAILABLE IN XXL - **AVAILABLE IN XXXL)

DARK NAVY, FOREST GREEN,
SURF BLUE, SOFT PINK



certified by Control Union
certification CU811271





M69

Women's Superstar T

Modern Fit T / Soft-Handle Peach Finish Fabric / 1X1 Rib Neck
/ Grin Stitch At Sleeve Ends And Hem / Tear-Off Label

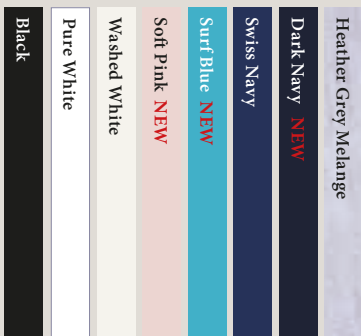
100% Cotton (Heather Grey Melange: 90% Cotton, 10% Viscose);
Dark Navy, Soft Pink & Surf Blue: 100% Organic Cotton / Style In
Transition To Organic Cotton / Peach Finish Single Jersey / 150gsm

S, M, L, XL

DARK NAVY, SURF BLUE,
SOFT PINK



certified by Control Union
certification CU811271



M85

Men's Superstar Tank Vest

Modern Fit Tank Vest / Soft-Handle
Peach Finish Fabric / Flatlock V
Stitch Detail At Front Neck / 1X1 Rib
Binding At Neck And Armholes / Twin
Needle At Hem / Tear-Off Label

100% Cotton (Heather Grey Melange:
90% Cotton, 10% Viscose) / Peach
Finish Single Jersey / 150gsm

S, M, L, XL





M88

Superstar Baseball T

Unisex Fit

Modern Fit / Soft-Handle Peach Finish Fabric / Curved Raglan Seams /
¾ Length Sleeve / Curved Hem With Contrast Overlock Edge / Tear-Off Label

100% Cotton (Black/Charcoal Grey Melange: 85% Cotton, 15% Polyester; Heather
Grey Melange/Swiss Navy: 96% Cotton, 4% Viscose); Pure White/Soft Pink & Pure
White/Dark Navy: 100% Organic Cotton / Style In Transition
To Organic Cotton / Peach Finish Single Jersey / 150gsm

XS, S, M, L, XL, XXL

PURE WHITE/ SOFT PINK
PURE WHITE/ DARK NAVY



certified by Control Union
certification CU811271

Heather Grey Melange	Washed White	Black	Pure White	Pure White NEW	Pure White NEW
Swiss Navy	Warm Red	Charcoal Grey Melange	Black	Dark Navy	Soft Pink



M178

**Superstar Short Sleeve
Baseball T**
with Organic Cotton

Modern Fit T / Soft-Handle Peach Finish Fabric / Raglan Sleeves / 1X1 Rib
Neck / Twin Needle Stitch At Sleeve Ends and Hem / Tear-Off Label

100% Organic Cotton (Charcoal Grey Melange/Black: 75% Organic Cotton,
25% Polyester; Washed White/Charcoal Grey Melange 85%: Organic Cotton,
15% Polyester) / Peach Finish Single Jersey / 150gsm

S, M, L, XL

PURE WHITE / DARK NAVY

WASHED WHITE/ CHARCOAL GREY
CHARCOAL GREY/ BLACK



certified by Control Union
certification CU811271



M175

Superstar Retro Ringer with Organic Cotton

Peach-Feel Fabric / Wide Contrast Binding At Neck
And Sleeve Ends / Classic Fit / Tear-Off Label

100% Organic Cotton (Heather Grey Melange/Swiss Navy:
91% Organic Cotton, 9% Viscose; Black/Charcoal Grey Melange:
94% Organic Cotton, 6% Polyester) / Peach Finish Single Jersey
/ 150gsm

S, M, L, XL

WASHED WHITE / WARM RED



certified by Control Union
certification CU811271





M86

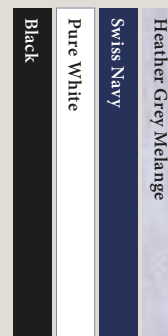
Men's Superstar Long Sleeve T

Soft Handle Peach Finish Fabric / Flatlock V Stitch Detail At
Front Neck / 1X1 Ribbed Cuffs / Ribbed Neck / Twin Needle
At Hem / Tear-Off Label

100% Cotton (Heather Grey Melange: 90% Cotton, 10% Viscose)
/ Style In Transition To Organic Cotton / Peach Finish Single Jersey
/ 150gsm

S, M, L, XL

T



M89

**Men's Superstar
 Sleeveless Hoodie**

Soft-Handle Peach Finish Fabric / Brushed Inner / High Neck
 Line / Rib Trim At Armholes / Brass Effect Zipper / Rib Trim
 Around Kangaroo Pockets / Self-Fabric Locker Patch On
 Inside Back Neck / Natural Herringbone And Self-Coloured
 Velvet Taping At Neck / Tear-Off Label

80% Cotton, 20% Polyester / Peach Finish /
 Brush-Back Fleece / 330gsm

S, M, L, XL

Black

Heather Grey Melange





M78

Men's Superstar Polo

Modern Fit / Wide 2 Button Placket With Neutral-Coloured Buttons / 1X1 Rib Collar / Natural Herringbone And Velvet Tape At Back Neck And Side Vents / Drop Tail / Ribbed Cuffs / Twin Needle Hem / Tear-Off Label

100% Cotton (Heather Grey Melange: 85% Cotton, 15% Polyester) / Piqué / 280gsm

S, M, L, XL, XXL



M79

Women's Superstar Polo

Modern Fit / Long, Skinny Placket With 5 Neutral-Coloured Buttons / 1X1 Rib Collar / Natural Herringbone And Velvet Tape At Back Neck And Side Vents / Drop Tail / Ribbed Cuffs / Twin Needle Hem / Tear-Off Label

100% Cotton / Piqué / 280gsm

S, M, L, XL



M76

Men's Superstar Sweatshirt

Soft-Handle Peach Finish Fabric / Raglan Sleeves
/ Rib V Insert At Front Neck / Ribbed Side Panels /
Tonal Striped Taping Along Inside Back Neck
/ Tab On Outside Back Neck / Tear-Off Label

80% Cotton, 20% Polyester / Peach Finish
/ Brush-Back Fleece / 330gsm

S, M, L, XL, XXL

Black

Swiss Navy

Heather Grey Melange





M176

Men's Superstar Baseball Sweatshirt

Premium, Peach Feel Fabric / Contrast Panelling / Contrast V
Insert At Neck / Tonal Striped Taping Along Inside Back Neck /
Back Neck Locker Patch / Raglan Sleeve / Brushed Inner
/ Contrast Ribbed Hem / Slimmer Fit / Tear-Off Label

80% Cotton, 20% Polyester / Peach Finish / Brush-Back Fleece
/ 330gsm

S, M, L, XL

Black
Charcoal Grey
Melange

M73

Men's Superstar Hoodie

Premium Quality / Soft-Handle Peach Finish Fabric / Brushed Inner / Deep, Waffle Lined 3-Piece Hood / Natural Coloured Drawcords / Natural And Self-Coloured Herringbone Tape Detail At Back Neck / Extended Flatlock Stitching At Kangaroo Pocket / Tear-Off Label

80% Cotton, 20% Polyester / Peach Finish / Brush-Back Fleece / 330gsm

S, M, L, XL, XXL





M74

Women's Superstar Hoodie

Premium Quality / Soft-Handle Peach Finish Fabric / Brushed Inner / Deep, Waffle Lined 3-Piece Hood / Natural Coloured Drawcords / Natural And Self-Coloured Herringbone Tape Detail At Back Neck / Extended Flatlock Stitching At Kangaroo Pocket / Gently Shaped Side Seams / Tear-Off Label

80% Cotton, 20% Polyester / Peach Finish / Brush-Back Fleece / 330gsm

S, M, L, XL



M83

Men's Superstar Zip Through Hoodie

Premium Quality / Soft-Handle Peach Finish Fabric / Brushed Inner / Deep, Lined 3-Piece Hood / Natural Coloured Drawcords With Brass Effect Tipping / Natural Herringbone And Self-Coloured Taping At Back Neck / Self Fabric Locker Patch On Inside Back Neck / Extended Flatlock Stitching At Kangaroo Pocket / Brass Effect Ykk Zipper / Tear-Off Label

80% Cotton, 20% Polyester / Peach Finish / Brush-Back Fleece / 330gsm

S, M, L, XL, XXL
(* COLOURS AVAILABLE IN XXL)





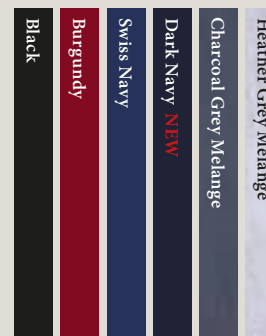
M84

Women's Superstar Zip Through Hoodie

Premium Quality / Soft-Handle Peach Finish Fabric / Brushed Inner / Deep, Lined 3-Piece Hood / Natural Coloured Drawcords With Brass Effect Tipping / Natural Herringbone And Self-Coloured Taping At Back Neck / Self Fabric Locker Patch On Inside Back Neck / Extended Flatlock Stitching At Kangaroo Pocket / Brass Effect Ykk Zipper / Tear-Off Label

80% Cotton, 20% Polyester / Peach Finish / Brush-Back Fleece / 330gsm

S, M, L, XL



One

GENDER NEUTRAL CLOTHING

Based on style, not gender, One is a capsule range of T's and sweats that have been cleverly designed to offer a great fit and feel for all. Want to wear them oversized? Without elasticated cuffs, it's easy to just roll back the sleeves to suit. We've looked at shoulder styling and hems too, and all garments come with tear-off label as standard to make it as easy as possible to tailor them to your own needs. With all garments made using organic cotton, and with recycled polyester used in place of standard polyester, we reckon One is the shape of things to come.







M130

'ONE' T

with Organic Cotton

Gender neutral / Curved raglan shaping at sleeve for best shoulder fit / Binding at neck / Tear-off label

100% Organic Cotton (Charcoal Grey Melange: 60% Organic Cotton, 40% Polyester) / Single Jersey / 150gsm

XS, S, M, L, XL, XXL



Charcoal Grey
Melange



certified by Control Union
certification CU811271

Black

White

Stone **NEW**

Light Denim

Navy

Charcoal Grey Melange



M133

'ONE' DROP ARMHOLE VEST

Organic Cotton

Gender neutral / Low armhole / Narrow binding for shape retention / Straight hem / Tear-off label

100% Organic Cotton / Single Jersey / 150gsm

XS, S, M, L, XL



certified by Control Union
certification CU811271

Black

White



M132

'ONE' HOODIE
with Organic Cotton

Gender-neutral / Straight hem with drop back tail and side vents / 3-piece hood / Welt front pockets / Hemmed cuffs / Drawcord-free neck / Back neck locker patch / Tear-off label

60% Organic Cotton, 20% Cotton, 20% Polyester / French Terry / 280gsm

XS, S, M, L, XL, XXL



certified by Control Union
certification CU811271

Black

White

Navy

Charcoal Grey Melange

Heather Grey Melange



NEW M136

'ONE' BRETON TOP

Organic Cotton

Gender-neutral / Side vents / Drop shoulder / Longer at back
/ Yarn-dyed stripes / Tear-off label

100% Organic Cotton / Interlock / 200gsm

XS, S, M, L, XL, XXL



certified by Control Union
certification CU811271





M131

'ONE' SWEAT with Organic Cotton

Gender-neutral / Straight hem with drop back tail and side vents / Hemmed cuffs / Raglan shaping /
Taped back neck / Back neck locker patch / Loop back fabric / Tear-off label

60% Organic Cotton, 20% Cotton, 20% Polyester / French Terry / 280gsm

XS, S, M, L, XL, XXL



certified by Control Union
certification CU811271

Black

Charcoal Grey Melange

Heather Grey Melange



M135

'ONE' SHORT SLEEVED SWEATSHIRT with Organic Cotton

Gender-neutral / Drop shoulder / Short sleeve / Ribbed neck / Straight hem with side vents /
Drop back tail / Inside back neck half-moon locker patch / Tear-off label

80% Organic Cotton, 20% Recycled Polyester (rPET); Heather Grey Melange:
85% Organic Cotton, 8% rPET, 7% Viscose / French Terry / 280gsm

XS, S, M, L, XL



certified by Control Union
certification CU811271

Black

Heather Grey Melange





mantis

ORIGINALS

Over in Mantis, it's about offering a range of fashionable, relevant and easy to wear styles that have been developed to stand the test of time. We're not about fast fashion or one-season wonders for that's a waste of all sorts of things including time, money and our planet's limited natural resources. All our new 2019 styles are made using combed, organic cotton and we're in the process of changing over the rest in line with our pledge to use only sustainable fibres by 2021.

NEW M191

THE TIPPED POLO

with Organic Cotton

Contrast tipping on collar and cuffs / Slim placket with 2 coconut shell buttons / Side vents / Drop tail / Smoother micro-piqué fabric / Ribbed cuffs and collar / Tear-off label

100% Organic Cotton (Heather Grey Melange:
85% Organic Cotton, 15% Viscose) / Micropiqué /
200gsm

S, M, L, XL, XXL



certified by Control Union
certification CU811271

Light Denim / Navy
Heather Grey Melange / White
Navy / White
Soft Pink / Navy
White / Navy





NEW M192

THE WOMEN'S TIPPED POLO

with Organic Cotton

Contrast tipping on collar and cuffs / Fashionable
boxy fit / Slim placket with 2 coconut shell buttons
/ Side vents / Drop tail / Smoother micro-piqué
fabric / Ribbed cuffs and collar / Tear-off Label

100% Organic Cotton (Heather Grey Melange:
85% Organic Cotton, 15% Viscose) / Micropiqué /
200gsm

S, M, L, XL



certified by Control Union
certification CUB11271

Light Denim / Navy
Heather Grey Melange / White
Navy / White
Soft Pink / Navy
White / Navy

M147

**WOMEN'S LOOSE FIT
V NECK T**

with Organic Cotton

Looser, relaxed fit / Deep V front / Narrow rib
around neckline / Curved hem / Tear-off label

100% Organic Cotton (Heather Grey Melange:
85% Organic Cotton, 15% Viscose) / Single Jersey
/ 125gsm

S, M, L, XL

BLACK AND WHITE ONLY

HEATHER GREY MELANGE



certified by Control Union
certification CU811271

Black

White

Heather Grey Melange





M91

WOMEN'S LOOSE FIT T

Loose fit, longer length T / Curved hem / Wide neckline / Twin needle hem and sleeve ends / Slightly longer at back / Tear-off label

100% Cotton (Heather Grey Melange: 85% Cotton, 15% Viscose; Charcoal Grey Melange: 60% Cotton, 40% Polyester; Tomato & Soft Olive: 100% Organic Cotton; Natural Melange: 80% Organic Cotton, 20% Polyester) / Single Jersey / 125gsm

S, M, L, XL, XXL
(*Colours available in XXL)

TOMATO AND
SOFT OLIVE



NATURAL MELANGE



certified by Control Union
certification CU811271



M81

WOMEN'S ROLL SLEEVE T
with Organic Cotton

Folded roll sleeves / Crew neck / 1X1 rib neck /
Twin needle straight hem / Shaped side seams /
Tear-off label

100% Organic Cotton (Charcoal Grey Melange:
60% Organic Cotton, 40% Polyester; Heather Grey
Melange: 90% Organic Cotton, 10% Viscose) /
Single Jersey / 150gsm

S, M, L, XL

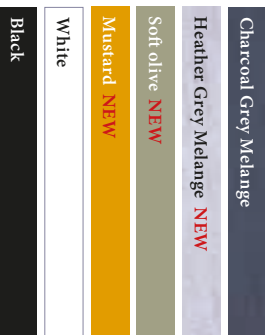
BLACK, WHITE, MUSTARD
AND SOFT OLIVE



HEATHER GREY MELANGE,
CHARCOAL GREY MELANGE



certified by Control Union
certification CU811271





M80

MEN'S ROLL SLEEVE T with Organic Cotton

Folded Roll Sleeves / Crew Neck / 1X1 Rib Neck
/ Twin Needle, Straight Hem / Tear-Off Label

100% Organic Cotton (Charcoal Grey Melange:
60% Organic Cotton, 40% Polyester; Heather Grey
Melange: 90% Organic Cotton, 10% Viscose) /
Single Jersey / 150gsm

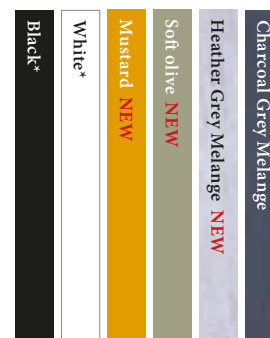
S, M, L, XL, XXL
(*Colours available in XXL)

BLACK, WHITE, MUSTARD
AND SOFT OLIVE

HEATHER GREY MELANGE,
CHARCOAL GREY MELANGE



certified by Control Union
certification CU811271





M109S

MEN'S STRIPY T

Yarn-dyed striped jersey fabric / 1x1 rib at neck
/ Twin needle stitching at hem and sleeve ends /
Tear-off label

100% Cotton / Single Jersey / 150gsm

S, M, L, XL

Also available for kids: HM109S

Navy	White
Classic Blue	White
Black	White
Black	Red



M110S

WOMEN'S STRIPY T

Yarn dyed striped jersey fabric / 1x1 rib at neck
/ Twin needle stitching at hem and sleeve ends /
Gently curved side seams / Tear-off label

100% Cotton / Single Jersey / 150gsm

S, M, L, XL

Also available for kids: HM109S

Navy	White
Classic Blue	White
Black	White
Black	Red

M129

FLASH DANCE T

Organic Cotton

Loose fit / Wide, off-shoulder neckline / Raglan sleeve / Raw edge at neck and sleeve ends / Straight hem with drop back tail and side vents / Tear-off label

100% Organic Cotton / Single Jersey / 150gsm

S, M, L, XL



certified by Control Union
certification CU811271

Black

White

Soft Pink **NEW**





M119

**WOMEN'S SCOOP BACK V
(2 WAYS TO WEAR)**
with Organic Cotton

Reversible / V and scoop neck options / Straight hem / Narrow rib around neckline / Tear-off label

100% Organic Cotton (Charcoal Grey Melange:
60% Organic Cotton, 40% Polyester) / Single Jersey/ 150gsm

S, M, L, XL

BLACK & WHITE



CHARCOAL GREY MELANGE



certified by Control Union
certification CU811271





NEW M193

THE BOYFRIEND T with Organic Cotton

Looser, over-sized fit / Drop shoulder / Rolled sleeves / Straight hem / Tear-off label

100% Organic Cotton (Heather Grey Melange:
90% Organic Cotton, 10% Viscose) /
Single Jersey / 150gsm

S, M, L, XL



certified by Control Union
certification CU811271





M96

WOMEN'S CROP TOP T
with Organic Cotton

Relaxed fit / Crop length crew T / 1X1 rib neck /
Twin needle hem / Roll back sleeves /
Tear-off label

100% Organic Cotton (Heather Grey Melange:
85% Organic Cotton, 15% Polyester) / Single Jersey
/ 150gsm

S, M, L, XL



certified by Control Union
certification CU811271



Black

White

Heather Grey Melange **NEW**



M123

**WOMEN'S VINTAGE SLUB
LOOSE FIT T**

Organic Cotton

Curved hem with grin stitch / Thick & thin effect
slub fabric / Loose and relaxed fit / Wider neckline
/ Tear-off label

100% Organic Cotton / Slub Jersey / 140gsm

S, M, L, XL

M124

MEN'S VINTAGE SLUB T

Organic Cotton

Grin stitch at hem and sleeve ends / Binding at
neck / Thick & thin effect slub fabric / Classic fit
/ Tear-off label

100% Organic Cotton / Slub Jersey / 140gsm

S, M, L, XL



certified by Control Union
certification CU811271







M126

MEN'S LONG LENGTH T

Organic Cotton

Longer length / Curved hem / Skater fit / Wide neck rib / Tear-off label

100% Organic Cotton / Single Jersey / 150gsm

S, M, L, XL



certified by Control Union
certification CU811271

M99

WOMEN'S LOOSE FIT T DRESS

Organic Cotton

Curved hem / Wide neckline / Slight drop tail / Narrow rib at neck / Twin needle hem and sleeve ends / Tear-off label

100% Organic Cotton / Single Jersey / 150gsm

S, M, L, XL



certified by Control Union
certification CU811271

Black

White





M71

WOMEN'S LONGER LENGTH T

Longer length T / 1x1 rib neck / Twin needle stitch hem
and sleeve ends / Tear-off label

100% Cotton / Single Jersey / 125gsm

S, M, L, XL

Black

White

M97

**WOMEN'S LOOSE FIT LONG
SLEEVE T**

Lighterweight fabric / Curved hem / 1x1 rib cuffs
/ Wide neckline / Slight drop tail / Twin needle
at hem / Tear-off label

100% Cotton / Single Jersey / 125gsm

S, M, L, XL

Black

White





M118

WOMEN'S LOOSE FIT HOODED T

Lighterweight T-Shirt hoodie / Loose fit /
Drawcord at hem and hood / Ribbed cuffs /
Tear-off label

100% Cotton (Heather Grey Melange: 85% Cotton,
15% Viscose) / Single Jersey / 125gsm

S, M, L, XL

Black

White

Heather Grey Melange



M104-TLC

MEN'S FAVOURITE T

With Organic Cotton

1x1 rib crew neck / Taped shoulder seams / Cover stitch hem and sleeve ends / Tear-off label

100% Organic Cotton (Heather Grey Melange: 85% Organic Cotton, 15% Polyester) / Single Jersey / 150gsm

S, M, L, XL



HEATHER GREY MELANGE



certified by Control Union
certification CU811271



M114

WOMEN'S U-NECK T

Organic Cotton

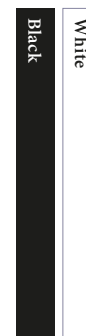
Open, scoop neck / Narrow self-fabric trim at neck / Twin needle at hem and sleeve ends / Tear-off label

100% Organic Cotton / Single Jersey / 150gsm

S, M, L, XL



certified by Control Union
certification CU811271





M120

MEN'S RAW SCOOP T
with Organic Cotton

Modern fit T / Cut-open 1x1 rib at neck to give raw edge / Lower, scoop neck / Twin needle hem and sleeve ends / Tear-off label

100% Organic Cotton (Charcoal Grey Melange: 60% Organic Cotton, 40% Polyester) / Single Jersey / 150gsm

S, M, L, XL

BLACK & WHITE



CHARCOAL GREY MELANGE



certified by Control Union
certification CU811271

Black

White

Charcoal Grey Melange





M92

WOMEN'S LOOSE FIT VEST

Lighterweight fabric / Curved hem / Binding at neck and armholes / Lower front and back neck / Twin needle hem / Tear-off label

100% Cotton (Charcoal Grey Melange: 60% Cotton, 40% Polyester; Natural Melange: 80% Organic Cotton, 20% Polyester; Soft Olive: 100% Organic Cotton)

S, M, L, XL, XXL
(*Colours available in XXL)



certified by Control Union
certification CU811271





M116

WOMEN'S CURVED VEST DRESS

Organic Cotton

Curved hem / Scoop front and back / Narrow binding around neck and armholes / Slim fit / Tear-off label

100% Organic Cotton / Single Jersey / 150gsm

S, M, L, XL



certified by Control Union
certification CU811271

Black

White



M72

WOMEN'S LONG LENGTH VEST

Lighterweight fabric / Scooped front and back neck / Gently fitted / Narrow binding at neck and armholes / Twin needle hem / Tear-off label

100% Cotton / Single Jersey / 125gsm

Sizes: S, M, L, XL

Black

White



M127

WOMEN'S CROP VEST

Organic Cotton

Shorter length / Slight A-line / Narrow binding
at neck and armholes / Twin needle hem /
Tear-off label

100% Organic Cotton / Single Jersey / 150gsm

S, M, L



certified by Control Union
certification CU811271

Black

White

M125

**WOMEN'S VINTAGE SLUB
TANK**

Organic Cotton

Thick and thin effect slub fabric / Longer, curved
back hem / Binding at neck and armholes /
Tear-off label

100% Organic Cotton / Slub Jersey / 140gsm

S, M, L



certified by Control Union
certification CU811271

Black

White

Slate Grey





M82

WOMEN'S RAW TANK T

Organic Cotton

Raw edge at armhole / Narrow rib at neck /
Straight hem with twin needle finish /
Tear-off label

100% Organic Cotton / Single Jersey / 150gsm

S, M, L, XL



certified by Control Union
certification CU811271

Black

White

M142

WOMEN'S HOODIE DRESS
with Organic Cotton

Loose fit / Longer length / Drop shoulder /
Extended, ribbed cuffs with thumbhole / Double
layer, 3-piece hood / Inside back neck taping /
Tear-off label

80% Organic Cotton, 20% Recycled Polyester (rPET)
/ French Terry / 280gsm

S, M, L, XL



certified by Control Union
certification CU811271

Black





M113

**WOMEN'S OVERSIZED
SLEEVELESS HOODIE**

Longer length / Loose fit / Raw edge at armholes
/ Unlined 3-piece hood / Natural drawcords /
Raw edge detail at hem / Kangaroo pocket /
Tear-off label

80% Cotton, 20% Polyester / French Terry / 280gsm

S, M, L

Black

Heather Grey Melange

M77

WOMEN'S FAVOURITE SWEATSHIRT

Bound neck / Raglan sleeves / Ribbed neck and cuffs / Wider neckline / Tear-off label

80% Cotton, 20% Polyester (Soft Pink & Soft Olive: 80% Organic Cotton, 20% Recycled Polyester (rPET)) / French Terry / 280gsm

S, M, L, XL

SOFT PINK, SOFT OLIVE



certified by Control Union
certification CU811271





NEW M194

THE SWEATSHIRT

with Organic Cotton

Set-in sleeves / Ribbed neck, hem and cuffs /
Locker patch / Herringbone back neck tape /
Tear-off label

80% Organic Cotton, 20% Recycled Polyester (rPET);
Heather Grey Melange: 71% Organic Cotton,
21% rPET, 8% Viscose / French Terry / 280gsm

S, M, L, XL, XXL



certified by Control Union
certification CU811271



M128

FLASH DANCE SWEAT

with Organic Cotton

Loose fit / Wide, off-shoulder neckline / Raw edge at neck / $\frac{3}{4}$ length sleeves with rolled back edge / Straight hem / Tear-off label

80% Organic Cotton, 20% Recycled Polyester (rPET);
Heather Grey Melange: 85% Organic Cotton,
8% rPET, 7% Viscose / French Terry / 280gsm

S, M, L, XL



certified by Control Union
certification CU811271

Black

White **NEW**

Heather Grey Melange





M121

**WOMEN'S LONG LENGTH
SWEAT**

Raglan sleeves / Longer, relaxed fit / Elliptical
hem (longer at back) / Loop-back fabric / Deep
1X1 ribbed hem and cuffs / Tear-off label

80% Cotton, 20% Polyester / French Terry / 280gsm

S, M, L, XL

Black

Heather Grey Melange





M140

CROPPED HOODIE with Organic Cotton

Loose fit / Cropped length / Drop shoulder /
Extended, ribbed cuffs with thumbhole / Double
layer, 3-piece hood / Inside back neck taping /
Tear-off label

80% Organic Cotton, 20% Recycled Polyester
(rPET); Heather Grey Melange: 71% Organic Cotton,
21% Recycled Polyester, 8% Viscose / French Terry
/ 280gsm

S, M, L, XL



certified by Control Union
certification CU811271

Black

White **NEW**

Heather Grey Melange **NEW**

NEW M195

DENIM TOTE BAG

Organic Cotton Denim

Jeans-style, orange stitching / Gusset / Reinforced
straps / Can be worn over shoulder / 12 litre capacity
/ Tear-off Label

100% Organic Cotton Denim / 9oz (300gsm)

One Size



certified by Control Union
certification CU811271

Denim Blue





NEW M196

DENIM SHOPPER

Organic Cotton Denim

Jeans-style, orange stitching / Re-inforced straps /
Gusset / Internal Patch Pocket / 22 litre capacity

100% Organic Cotton Denim / 9oz (300gsm)

One Size



certified by Control Union
certification CU811271

Denim Blue



INTRO

WE BELIEVE THAT IF SOMETHING'S WORTH DOING IT'S WORTH DOING WELL. FOR US THAT MEANS GREAT QUALITY GARMENTS MADE IN A WAY THAT'S RESPECTFUL OF ALL THOSE INVOLVED THROUGHOUT THE WHOLE PRODUCTION PROCESS AND THAT SHOWS DUE CARE AND CONSIDERATION TO THE ENVIRONMENT.

We believe we've got an obligation to both current and future generations to act responsibly and so we've committed to using only sustainable fibres: those that are eco-friendly and that don't strip the world of natural and non-renewable resources, throughout all we do by 2021.

Almost everything we've introduced over the past few years has been made using organic cotton instead of conventional and we're currently moving all other styles over in line with our promise. For those styles we're in the process of changing (those marked with a **T** next to the description) you won't notice any difference other than an organic logo on the swing ticket or care label. This means we can assure you that the garments, whilst retaining all

that softness, appearance and quality of fabric, are made from cotton that's not grown using potentially harmful synthetic pesticides, that's not proving toxic to those involved in growing it and that's not depleting our earth. It's a small change that can mean so much and for so many reasons – and all of them positive.

We're not about fast fashion nor creating clothes that are destined to be worn once and thrown away. We want our clothes to be a great base for your decoration and ideas; garments that can be worn time and time again and that you're as proud of as we are.

We've been doing what we do since 2000 and we're still on a mission to make our world a better one. Thanks to you for joining us on our journey.



BACK NECK LABEL

If total garment personalisation is what you're after, we've got the labelling system for you. We started introducing tear-off back neck labels over 5 years ago and we've been attaching them for you to remove ever since. And when we say tear-off, we really mean it. One quick rip on the white tab and the back neck of the garment is a tag-free space without your having to contend with fiddly unpicking or untidy cutting. However, if you're rather fond of the little tab and prefer to keep the size and style reference details printed on it, you can be assured it's soft and comfortable in wear. There's no room for itchy or scratchy tags in our world.

CARE LABEL

You'll probably have noticed that care labels on all garments are getting bigger and carry so much more information than ever before. There's not much we, or indeed any other brand, can do about that due to the legislations and directives imposed by various bodies and businesses across several countries and continents. We know a lot of you don't want our brand name on the care label and if we didn't have to put it there then we probably wouldn't. But we're told we must - and so we have. But, to delight all the personalisation people out there, we've positioned it right at the very end of the label so it can be cut right off with a quick snip. One slice with the scissors and what's left is all the legal fibre content stuff, the language bits and some wash care guidelines. Invariably these will include the recommendation to wash the garment inside out to protect the surface of the garment from all that agitation and to consider lower temperatures to save energy - both also helping prolong the wear life of the garments.

**LABELLING
INFO**

WOMEN'S FIT SIZES				
	CHEST (IN)	CHEST (CM)	UK SIZE	CONTINENTAL
S	32/34in	81/86cm	10	38
M	35/37in	88/94cm	12	40
L	38/40in	96/101cm	14	42
XL	41/43in	104/109cm	16–18	44
XXL	44/46in	112/117cm	18–20	46

MEN'S FIT SIZES				
	CHEST (IN)	CHEST (CM)	WAIST (IN)	WAIST (CM)
S	36/38in	91/96cm	30/32in	76/81cm
M	39/41in	99/104cm	32/34in	81/86cm
L	42/44in	106/111cm	34/36in	86/91cm
XL	45/47in	114/119cm	36/38in	91/96cm
XXL	48/49in	124cm		
XXXL	50/ 52in	127/132cm		

“ONE” FIT SIZES		
The following size guide offers a classic and/or slimmer fit. For relaxed or oversized look, use size up.		
	CHEST (IN)	WAIST (IN)
XS	33/35in	84/89cm
S	36/38in	91/96cm
M	39/41in	99/104cm
L	42/44in	106/111cm
XL	45/47in	114/119cm
XXL	48/49in	122/125cm

mantis
★SUPERSTAR

mantis
★SUPERSTAR

one

CHILDREN'S FIT SIZES			
YEARS	HEIGHT (CM)	CHEST (IN)	CHEST (IN)
2-3	92/98cm	20/21in	51/53cm
4-5	104/110cm	22/23in	56/58cm
6-7	116/122cm	24/26in	61/66cm
8-9	128/134cm	27/28in	68/71cm
10-12	140/152cm	30/32in	76/81cm
12+	158/164cm	33/34in	83/87cm


BABIES' FIT SIZES			
MONTHS	HEIGHT (CM)	HATS	BIBS
0-3	53/60cm	One Size	0-9 months
3-6	60/66cm	One Size	0-18 months
6-12	66/76cm		
12-18	76/86cm		
18-24	86/93cm		
2-3 YRS	92/96cm		

mantis
MINI
mantis
KIDS

BABYBUGZ

You may find that measurements such as height are a better guide than age when it comes to choosing the right size for our Mantis Kids, Mantis Mini and Babybugz ranges.



A young woman with short dark hair, wearing a red t-shirt and blue jeans, is sitting on a white pedestal. She is smiling and looking towards the camera. The background is a solid blue color with a faint, stylized white graphic of a person's head and shoulders. The text 'CODE OF CONDUCT & ETHICS' is written in large, white, bold, sans-serif capital letters on the right side of the image.

CODE OF CONDUCT & ETHICS

WE APPRECIATE EVERYONE WHO CONTRIBUTES TO MAKING OUR CLOTHING AND WE ENSURE THAT THEY WORK IN FAIR CONDITIONS FOR A FAIR WAGE, IN AN ETHICAL AND SUSTAINABLE MANNER. OUR FACTORIES ARE AT LEAST BSCI COMPLIANT. OUR CODE OF CONDUCT IS A SHARED COMMITMENT BETWEEN US AND OUR PARTNER SUPPLIERS AND FACTORIES, AND IS A SET OF STANDARDS THAT WE LIVE BY.

We work with only reputable manufacturers; each with a clear ethical and social policy with relevant and recognised certifications that are in line with our own Well Made ethos and Code of Conduct.

We only work with mills who have a suitable and effective effluent treatment plant (ETP) to ensure that the water used in the wet processing / dyeing stages of our production is safe to be put back into the environment.

In order to ensure that our garments are kind to skin and with no potentially harmful dyes or chemicals used during manufacture, we insist that all our fabrics are certified to Oeko-tex® Standard 100, with all babywear fabric holding class 1 certification.

We ensure we know where the cotton used in the manufacture of all Mantis World garments comes from, and, in keeping with our ethical policy regarding the use of child or forced labour, continue our pledge not to use Uzbek cotton.

- No child labour
- No forced labour
- No physical disciplinary measures
- No discrimination of any kind
- Fair wages, reasonable working hours and overtime pay in accordance with local legislation
- Freedom of association and rights to collective bargaining
- Paid maternity leave
- A clean, healthy and safe work environment
- On-site health clinics or a first-aid centre
- A policy of social accountability
- Anti-bribery policy
- Anti-corruption policy

Protection and preservation of the local environment including:

- Consideration of scarce resources
- Careful waste management
- Policy to reduce, reuse and recycle
- Effluent treatment plants to ensure clean water is returned to local water systems.

Every country is different and each of our manufacturing partners provides different benefits depending on local needs. These can range from:

- Free or subsidised meals
- Free standard medication and health education
- On-site childcare facilities
- Food assistance for employees' families
- Support of local community groups.



MANTIS WORLD TAKES CERTIFICATION AND STANDARDS SERIOUSLY.

**WE ALL VALUE THE
ASSURANCES CERTIFICATION
BRINGS; THE KNOWLEDGE AND
PROOF THAT PROCESSES HAVE
BEEN ASSESSED - AND THAT
THEY MEET DEFINED STANDARDS.
THE FOLLOWING ARE BRIEF
DESCRIPTIONS OF THE VARIOUS
STANDARDS, CERTIFICATIONS
AND COMPLIANCES, INDUSTRY
BODIES AND LOGOS THAT ARE
RELEVANT TO OUR MANTIS WORLD
BUSINESS AND PRODUCT RANGES.**



Styles as marked with this logo are, at time of writing, in transition from containing conventional cotton to organic cotton. See **PXX** for more information.



The Global Organic Textile Standard (GOTS) ensures the organic status of textiles, from cotton harvest, through responsible manufacturing to the end consumer in a fully traceable manner. Mantis World is certified by Control Union under reference CU811271. However, only garments decorated by a GOTS certified processor can use the GOTS logo at their point of sale which is why we have removed the GOTS label in our garments, although they remain fully certified in accordance with the standard.

www.global-standard.org



The Organic Content Standard (OCS) verifies the amount of organic material in a final product. It provides a strong chain of custody system from the source of the organic cotton to the final product through certification and independent verification. Mantis World is certified by Control Union under license 811271 and our garments are labelled with OCS to guarantee the organic content.

www.textileexchange.org



STANDARD 100 by OEKO-TEX® is an independent product certification label for textiles that have been tested for harmful substances, dyestuffs and chemicals that may pose a health or environmental risk. Mantis World holds STANDARD 100 by OEKO-TEX® product class 1 certification, offering the highest level of assurance for all components of our clothing from the fabric through to threads, zips, buttons and labels.

www.oeko-tex.com



The Recycled Content Standard (RCS) is a chain of custody standard that tracks recycled raw materials through the supply chain. It sets requirements for independent certification of recycled input. Under the standard, each stage of production is required to be certified, beginning at the recycling stage. Our styles made with recycled polyester (rPET) have come from suppliers with RCS certification. In addition, we have pledged to increase our use of rPET by 25% by 2020 verified by Textile Exchange.

www.textileexchange.org



SA8000®, one of the world's pre-eminent social standards is an auditable certification standard that encourages organisations to develop, maintain and apply socially acceptable practices in the workplace. It is based on the UN Declaration of Human Rights, conventions of the ILO, UN and national law, and measures social performance with the aim of protecting workers along each stage of the supply chain. Mantis World encourages all suppliers to attain SA8000® or equivalent certification.

www.sa-intl.org



The Business Social Compliance Initiative (BSCI) is a non-profit organisation dedicated to the improvement of working conditions in the supply chain, with factories audited against the BSCI base code. Mantis World works with factories that are BSCI compliant or equivalent as an acceptable level of compliance.

www.bsci-intl.org



The Sustainable Clothing Action Plan (SCAP), led by The Waste and Resources Action Programme (WRAP) brings together leading retailers, brands, re-use and recycling organisations, charities and NGOs to take action on garment supply, use and disposal to reduce their carbon, water and waste footprint. As a signatory, Mantis World submit annual reports to SCAP to measure our improvement in these areas.

www.wrap.org.uk/sustainable-textiles



Mantis World is proud to be a member supporting the work of Textile Exchange (TE) - a non-profit organisation committed to the responsible expansion of textile sustainability across the global textile value chain. Through their Preferred Fibre and Materials benchmark, we are independently measured on our use of preferred raw materials such as recycled polyester and organic cotton, both year on year and in comparison with our peers.

www.textileexchange.org

Mantis World are proud to support Canopy, the non-profit environmental organisation dedicated to protecting our forests, species and climate. Canopy collaborates with more than 750 companies to develop innovative solutions to make their supply chains more sustainable. All viscose in our collection comes from suppliers audited and accredited by Canopy guaranteeing no raw materials come from ancient and endangered forests.

www.canopyplanet.org



The British Promotional Merchandise Association (BPMA) is a trade association representing the promotional products industry. As a member, Mantis World have signed up to the BPMA industry code of conduct.

www.bpma.co.uk



Common Objective (CO) is an intelligent business network that furthers sustainability in the fashion industry. Building on 12 years of work of the Ethical Fashion Forum. As a Founding Impact Partner, Mantis World is collaborating with CO to transform the way the fashion industry operates - for the better.

www.commonobjective.co



Launched by The Princes of Wales's International Sustainability Unit (ISU), the Sustainable Cotton Challenge brings together brands and retailers to pledge to move to 100% sustainable cotton by 2025. This initiative, now run by TE, recognises several existing standards as delivering sustainable cotton. Mantis World joined the Challenge in 2017 and has additionally pledged to using only the "gold standard" of sustainable cotton (organic or recycled) and doing so 4 years earlier by 2021.

www.textileexchange.org/2025-sustainable-cotton-challenge



The Fashion Industry Charter for Climate Action, initiated by the UN, seeks to tackle the damaging effects of the fashion industry on climate change. Waste, pollution, deforestation, toxicity in manufacture and carbon-fuelled supply chains combine to make fashion one of the most environmentally damaging industries, and reform is essential. Mantis World has committed to implement the principles enshrined in the Charter and to work collaboratively with our peers and relevant stakeholders.

www.unfccc.int

MANTIS WORLD BESPOKE

bespoke
adjective

of goods, especially
(clothing) made to order

sustainable
adjective

1. able to be maintained at a certain rate or
level. "sustainable economic growth"

2. able to be upheld or defended.
"sustainable definitions of good educational
practice"

unique
adjective

1. being the only one of its
kind; unlike anything else



**MANTIS WORLD'S BESPOKE
DEPARTMENT HAS BEEN
QUIETLY SUPPLYING SOME
OF THE VERY BIGGEST
INTERNATIONAL CLIENTS
NEEDS FOR OVER A DECADE.**

Our team of professional and experienced merchandisers offer a start-to- finish bespoke garment service and will happily guide you through the process and all the aspects from initial concept to delivery.

We've worked exclusively with high profile International and National brands to produce and supply distinctive fashion-led apparel for product and brand merchandise, marketing and high-end retail from West End theatre productions, beverage brands and breweries to Music industry bands, performers, Motor Sport including Formula 1 and garments for International and UK events.

Skilled in providing a fully bespoke Ethical & Sustainable service from design to delivery, we work with factories both in the UK and Internationally. We specialise in transferring trends in Ethical & Sustainable textiles and fashion to the corporate arena and providing companies with a more cost effective and longer serving solution to brand visibility and longevity.

- Your own design styles
- Your own patterns
- Fabric selections and finishes
- Specific Pantone colour matching
- Printing, embroidery, badging
- Unique branded trims, buttons, zippers
- Brand Labelling & Retail Swing ticketing
- .pdf visuals and Mood Boards
- Packaging and Warehouse services and fulfilment

Mantis World have been trusted by retail, promotional, commercial and FMCG business for many years. We even developed and created a collection of Luxury Men's styles all sourced, cut and stitched by UK artisan makers for Steven Knight, the creator of the BBC cult series "Peaky Blinders". We have the heritage and experience to deliver on your expectations and all within your budget and delivery requirements.

To find out more about what can do to help you get the perfect match to your requirements, contact the team at bespoke@mantisworld.com



Mantis collection
for men and
women is launched
with 8 styles.

2000

2001

2002

2003

2004

2005

2006

2007

2008

We launch Humbugz,
our brand of
contemporary
kidsweat.

Mantis World receive
the OEKO-TEX® 100
Certification.

Babybugz arrives,
and we introduce
our capsule
range of organic
clothing which
is called, rather
appropriately,
Tender Loving
Clothing.

Mantis World
becomes a
member (and
soon to be a
Founding Partner)
of the Ethical
Fashion Forum.

Introduction of
our Bespoke
production
service.

We receive the RE:Fashion Award in partnership
with our factory in Tanzania, the European Chic
Award for the best childrenswear collection and
the Printwear & Promotion Excellence Award as
"Manufacturer of the Year".

Mantis World obtains GOTS certification and our
factories get BSCI (Business Social Compliance
Initiative) certified.

We become a member of Textile Exchange
(formerly Organic Exchange).

2009

2010

2011

2012

2013

2014

2015

2016

2017

2018

2019

2020

2021

Mantis World win the Ethical Fashion Forum's Source Award as "Best Sustainable Supplier".

The sustainable TENCEL® fibre is being introduced into our range.

Understanding children are not all the same, and have different wants in terms Mantis Kids & Mantis Mini replace the Humbugz brand.

Launch of our gender-neutral "One" Range.

We obtain the OCS (Organic Content Standard) certification.

Mantis World join the "Sustainable Cotton Communique" introduced by HRH the Prince of Wales, as part of a group of clothing brands pledging to only use sustainable cotton by 2025. We go further and promise to do same 4 years earlier and by 2021.

All the cotton we are using will be from only sustainable sources.

Our partner factories obtain SA8000 certification.

We're being awarded "Supplier of the Year" by our customer Adnams Southwold.

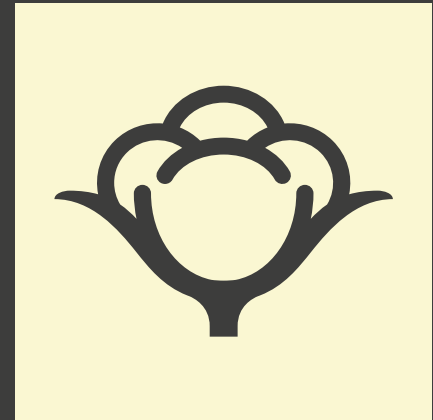
Mantis World join Canopy, making sure the viscose we are using does not come from endangered forests.

We start using recycled polyester made from waste plastic bottles.

Mantis World is a founding signatory of the UN's Fashion Industry Charter for Climate Action.



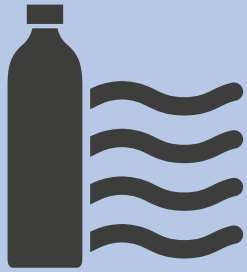
SUSTAINABILITY MATTERS



No harmful chemicals are used across the whole supply chain, which is friendlier and less irritating to our skin.

MANTIS WORLD HAVE BEEN USING ORGANIC COTTON SINCE 2005 AND WE WILL CONVERT OUR ENTIRE COLLECTION TO MORE SUSTAINABLE FIBRES BY 2021.

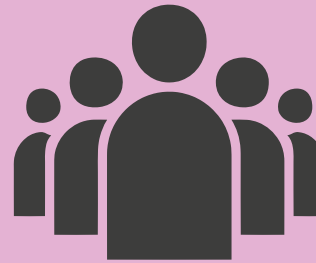
EVERY ONE OF US CAN MAKE A DIFFERENCE TO THE FUTURE OF OUR PLANET BY USING ORGANIC, SUSTAINABLE AND RESPONSIBLY PRODUCED TEXTILES. LET'S WEAR OUR CLOTHES FOR LONGER, LOOK AFTER THEM CAREFULLY AND RECYCLE THEM PROPERLY FOR MAXIMUM IMPACT!



Recycled polyester from PET bottles reuses plastic, saving it from ending up as landfill or in the ocean.



Using viscose from certified sources saves trees in critically endangered forests.



Workers and farmers earn a fair income, working in safe conditions and investing in their families' future.



Organic farming encourages a higher quality “living” soil, making it more resilient to extreme weather patterns such as floods and droughts.



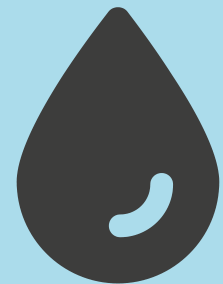
Organic cotton is grown naturally without genetically modified seeds, artificial fertilisers or chemical pesticides.



Organic agriculture encourages biodiversity by avoiding the use of toxic pesticides and so safeguarding our wild animal and plant life.



Organic farming can actually reverse climate change by locking carbon in the soil. It also avoids fertilisers and pesticides heavily reliant on fossil fuels that are used in conventional agriculture.



Organic farming uses less water as the cotton is more likely to be rain fed and does not contaminate the water with toxic chemicals and nitrogen fertilisers.



COLOUR SWATCHES

mantis

White
Black
Stone
Ivory
Soft Pink
Soft Olive
Mustard
Tomato
Light Denim
Denim Blue
Slate Grey
Navy
Heather Grey Melange
Natural Melange
Charcoal Grey Melange

STRIPES

Black	White
Black	Red
Classic Blue	White
Navy	White

★SUPERSTAR

Pure White
Washed White
Black
Soft Pink
Warm Red
Surf Blue
Cobalt Blue
Forest Green
Burgundy
Swiss Navy
Dark Navy
Heather Grey Melange
Charcoal Grey Melange

BASEBALL T'S

Pure White	Soft Pink
Washed White	Warm Red
Pure White	Dark Navy
Pure White	Black
Heather Grey Melange	Swiss Navy
Black	Charcoal Grey Melange

mantis mantis MINI KIDS

White
Washed White
Black
Lavender
Fuchsia
Red
Turquoise
Cobalt Blue
Nautical Navy
Washed Navy
Heather Grey Melange

STRIPES (MANTIS MINI)

Black	White
Classic Blue	White

BASEBALL T'S

Heather Grey Melange	Swiss Navy
Washed White	Warm Red
Washed White	Swiss Navy

BABYBUGZ

White	Surf Blue
Black	Cobalt Blue
Vanilla	Mint
Organic Natural	Kelly Green
Soft Yellow	Camouflage Green
Orange	Denim Blue
Powder Pink	Nautical Navy
Bubble Gum Pink	Heather Grey Melange
Fuchsia	Heather Blue
Red	Mocha
Dusty Blue	Charcoal Grey Melange

STRIPES

 Powder Pink / White	 White / Heather Grey Melange
 Antique Blue / Dusty Blue	 White / Nautical Navy
 Light Grey Melange / White	 Red / Washed White
 Organic Natural / Mocha	 Navy / Washed White

Colours may vary slightly and be modified by the printing process.



TRANSLATIONS



ESPAÑOL

Agradecemos la colaboración de todos los que intervienen en la fabricación de nuestras prendas y nos aseguramos de que trabajen en condiciones laborales dignas, con un salario justo y de forma ética y sostenible. Cumplimos la norma BSCI u otras equivalentes. Nuestro código de conducta consiste en un conjunto de normas acorde al que vivimos y supone un compromiso compartido entre nosotros y nuestros socios proveedores y fábricas.

- No a la mano de obra infantil
- No a la mano de obra explotada
- No al castigo físico disciplinario
- No a la discriminación de cualquier índole
- Salarios justos, horario laboral razonable y horas extra pagadas de conformidad con la legislación local
- Libertad de asociación y derecho a negociar el convenio colectivo
- Permiso de maternidad remunerado
- Un entorno laboral limpio, saludable y seguro
- Servicio médico o botiquín de primeros auxilios en el centro de trabajo
- Política de responsabilidad social
- Política anti soborno
- Política anticorrupción

La protección y conservación del entorno local incluyen:

- Prestar atención a los recursos escasos
- Gestión meticulosa de los residuos
- Política para reducir, reutilizar y reciclar
- Plantas de tratamiento de aguas residuales para garantizar que el agua limpia se devuelva a los sistemas locales de aguas.

Cada país es diferente y dependiendo de las necesidades locales, cada uno de nuestros socios fabricantes ofrece

diferentes beneficios, entre los que se pueden incluir los siguientes:

- Comidas gratuitas o subvencionadas
- Medicación estándar gratuita y educación en materia de salud
- Guardería en el lugar de trabajo
- Ayudas para alimentación destinadas a las familias de los empleados
- Ayuda de los grupos comunitarios locales



ITALIANO

Apprezziamo chiunque contribuisca a produrre i nostri capi di abbigliamento e ci assicuriamo che lavori in condizioni di lavoro giuste in cambio di un salario equo, in modo etico e sostenibile. Aderiamo al codice di condotta BSCI o equivalente. Il nostro codice di condotta è un impegno condiviso tra noi, i nostri partner - fornitori e industrie. Si tratta di una serie di norme che adottiamo in prima persona.

- No al lavoro minorile
- No allo sfruttamento
- No a misure disciplinari fisiche
- No a tutti i tipi di discriminazione
- Retribuzioni eque, orari di lavoro ragionevoli e retribuzione dello straordinario in base alle disposizioni delle normative locali
- Libertà sindacale e diritti di contrattazione collettiva
- Congedo di maternità retribuito
- Ambiente di lavoro pulito, sano e sicuro
- Assistenza medica in azienda o nell'ambulatorio
- di primo soccorso in azienda
- Politica di responsabilità sociale
- Politica anti-concussione
- Politica anti-corrruzione

- Protezione e tutela dell'ambiente locale includono:
- Rispetto di risorse scarse
- Gestione attenta dei rifiuti
- Politica mirata a ridurre, riutilizzare e riciclare
- Impianto di trattamento degli effluenti per garantire un ritorno di acqua pulita nella rete idrica locale.

Ogni nazione è diversa e ciascuno dei nostri partner di produzione offre benefit diversi, in base alle esigenze locali, fra cui:

- Pasti gratuiti o sovvenzionati
- Accesso libero a farmaci standard ed educazione sanitaria
- Strutture aziendali di assistenza all'infanzia
- Assistenza alimentare per le famiglie dei dipendenti
- Sostegno a gruppi della comunità locale.



DEUTSCH

Wir schätzen jeden, der seinen Beitrag dazu leistet, unsere Kleidung herzustellen und wir stellen sicher, dass alle Beteiligten unter fairen Bedingungen und für einen fairen Lohn arbeiten – auf eine ethische und nachhaltige Art und Weise. Wir arbeiten konform mit dem BSCI oder gleichwertigen Standards. Unser Verhaltenskodex ist eine gemeinsame Verpflichtung zwischen uns und unseren Lieferanten und Partnerfabriken – er repräsentiert die Maßstäbe, nach denen wir leben.

- Keine Kinderarbeit
- Keine Zwangsarbeit
- Keine körperlichen Disziplinarmaßnahmen
- Keine Diskriminierung

- Faire Löhne, angemessene Arbeitszeiten und Bezahlung von Überstunden in Übereinstimmung mit der örtlichen Gesetzgebung
- Koalitionsfreiheit und Recht auf Tarifverhandlungen
- Bezahlter Mutterschutz
- Ein sauberes, gesundes und sicheres Arbeitsumfeld
- Kliniken oder Erste-Hilfe-Zentren vor Ort
- Politik der sozialen Verantwortung
- Anti-Bestechungspolitik
- Anti-Korruptionspolitik

Schutz und Erhalt der Umwelt vor Ort durch:

- Berücksichtigung knapper Ressourcen
- Schonende Entsorgung
- Reduzierung, Wiederverwendung und Recycling
- Anlagen für die sichere Aufbereitung von Abwasser, um zu gewährleisten, dass sauberes Wasser in das lokale Wassersystem zurückgeführt wird

Jedes Land ist anders und aus diesem Grund bieten unsere Partnerfabriken verschiedene Leistungen, die auf die lokalen Bedürfnisse zugeschnitten sind. Diese beinhalten z.B.:

- Kostenlose oder subventionierte Mahlzeiten
- Kostenlose medizinische Standardbehandlung und Gesundheitserziehung
- Kinderbetreuung vor Ort
- Unterstützung bei der Verpflegung für die Familien der Angestellten
- Unterstützung örtlicher Gemeinschaftsgruppen



FRANÇAIS

Nous apprécions tout le monde qui contribue à fabriquer nos vêtements et nous garantissons qu'elles travaillent dans des conditions équitables, pour un salaire juste, et de manière éthique et durable. Nous adhérons à la BSCI ou équivalent. Notre code de conduite est un engagement commun entre nos fournisseurs, usines partenaires et nous, et consiste en un ensemble de normes que nous respectons.

- Aucune main d'œuvre infantile
- Aucun travail forcé
- Aucune mesure disciplinaire physique
- Aucune discrimination quelle qu'elle soit
- Rémunération juste, journée de travail raisonnable et heures supplémentaires payées conformément à la législation en vigueur au niveau local
- Liberté syndicale et droit aux négociations collectives
- Congé de maternité payé
- Environnement de travail sain, propre et sécurisé
- Centres médico-sociaux sur site, ou centres de premiers soins
- Politique de responsabilité sociale
- Politique anti-subornation
- Politique anti-corruption

Protection et préservation de l'environnement local, y compris:

- Prise en compte des ressources limitées ;
- Gestion attentive des déchets ;
- Politique visant à réduire, réutiliser et recycler ;
- Usines de traitement des effluents pour assurer qu'une eau propre est réinjectée dans les systèmes d'eau locaux.

Chaque pays est différent et chacun de nos partenaires de fabrication apporte différents avantages en fonction des besoins locaux. Cela peut comprendre :

- Des repas gratuits ou subventionnés ;
- Une éducation sanitaire et des médicaments de base
- gratuits ;
- Des services de garde d'enfants sur le site ;
- Une aide alimentaire aux familles des employés ;
- Une assistance aux associations locales.

Our tale may have started at the turn of the century but the twinkle is still in our eyes and we remain in love with being able to offer you a range of blank baby and kidswear specially designed for decoration and your personalisation and made to the highest ethical standards. It's a brand new world for many and we reckon it's worth making it the best we possibly can.

2019 brings new styles and colours and a commitment to increasing our use of organic cotton throughout in line with our journey towards sustainability. Grown without potentially nasty pesticides or chemicals whilst retaining all that gorgeously soft natural feel, organic cotton's a perfect choice for tender, young skin. It's better for the environment and for the cotton farmers too which makes it a bit of a no-brainer, we reckon.

Hello and welcome to our world.

BABYBUGZ mantis MINI mantis KIDS

BZ10 BABY BODYSUIT

Envelope neckline / 3 self-coloured poppers at crotch
/ Soft and stretchy fabric / Binding at neck, arms and
legs for shape retention

100% cotton: Bubble Gum Pink, Dusty Blue, Kelly Green,
Nautical Navy, Powder Pink, Red & Soft Yellow

85% Cotton, 15% Viscose: Heather Grey Melange

100% Organic Cotton: Black, Camouflage Green, Cobalt
Blue, Fuchsia, Surf Blue, Organic Natural & White:

60% Organic Cotton, 40% Polyester: Mocha, Charcoal Grey
Melange & Heather Blue

Interlock / 200gsm

Sizes (Months):

0-3, 3-6, 6-12, 12-18, 18-24

(*COLOURS AVAILABLE IN 18-24)

ALL 100% ORGANIC COTTON
SHADES



CHARCOAL GREY MELANGE,
MOCHA, HEATHER BLUE



certified by Control Union
certification CU811271





ORGANIC
NATURAL



SOFT
YELLOW



POWDER
PINK



BUBBLE
GUM PINK



FUCHSIA



RED



HEATHER
GREY
MELANGE



DUSTY
BLUE



HEATHER
BLUE



SURF BLUE



COBALT
BLUE



KELLY
GREEN



WHITE*



MOCHA



CAMOUFLAGE
GREEN



CHARCOAL GREY
MELANGE



NAUTICAL
NAVY



BLACK*



CONTAINS
ORGANIC
COTTON



COTTON

BZ10S BABY STRIPY BODYSUIT

Yarn-dyed stripes / Envelope neckline / 3 silver-coloured poppers at crotch / Soft and stretchy fabric / Binding at neck, arms and legs for shape retention

100% Cotton (Light Grey Melange: 97% Cotton, 3% Viscose) / Interlock / 200gsm

Sizes (Months):

0-3, 3-6, 6-12, 12-18



RED / WASHED WHITE



POWDER PINK / WHITE



ANTIQUE BLUE / DUSTY BLUE



LIGHT GREY MELANGE / WHITE



NAVY / WASHED WHITE



BZ19 BABY RINGER BODYSUIT

Crew neck bodysuit with poppers at side neck / 3 self-coloured poppers at crotch / Soft and stretchy fabric / Contrast binding at neck, arms and legs for shape retention

100% Cotton (White/ Kelly Green & White/ Bubble Gum Pink: 100% Organic Cotton; White/ Heather Grey Melange: 96% Organic Cotton, 4% Polyester) / Interlock / 200gsm

Sizes (Months):

3-6, 6-12, 12-18



WHITE / BUBBLE GUM PINK **NEW**



WHITE / BLACK



WHITE / HEATHER GREY MELANGE **NEW**



WHITE / RED



WHITE / NAUTICAL NAVY



WHITE / KELLY GREEN **NEW**



BZ30 BABY LONG SLEEVE BODYSUIT WITH ORGANIC COTTON

Envelope neckline / Binding at sleeve ends for shape retention /
Soft and stretchy / Self-coloured poppers at crotch /
Tear-off label

100% Organic Cotton / (Heather Grey Melange: 85% Organic Cotton,
15% Polyester) / Interlock / 200gsm

Sizes (Months):
0-3, 3-6, 6-12, 12-18



WHITE



FUCHSIA



ORGANIC NATURAL



NAUTICAL NAVY



BLACK



HEATHER GREY
MELANGE **NEW**

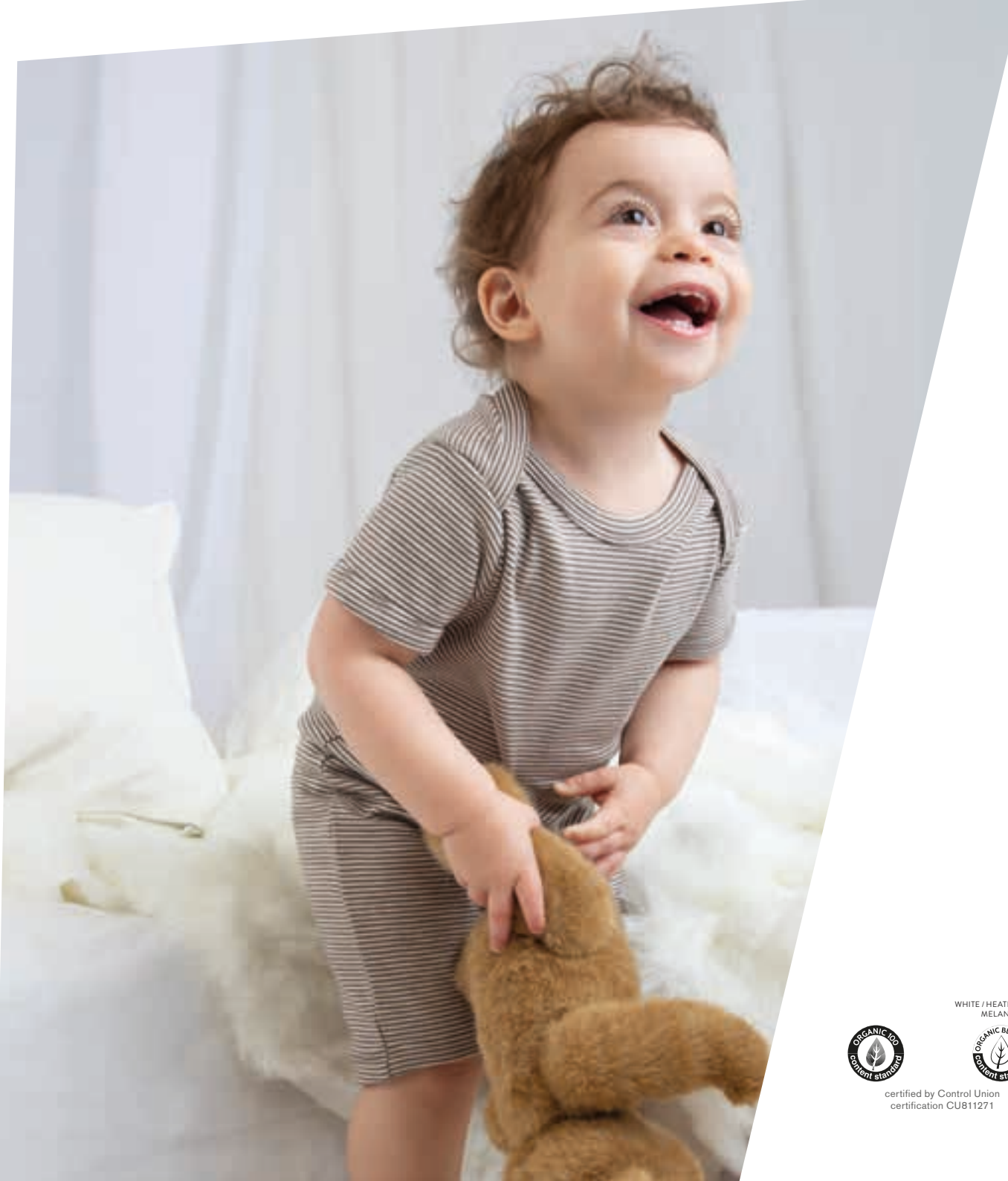


HEATHER GREY MELANGE



certified by Control Union
certification CU811271





BZ48 BABY STRIPED PLAYSUIT WITH ORGANIC COTTON

Narrow, yarn-dyed stripes /
Shorts-style bodysuit / Envelope
neck / Poppers at crotch for ease
of dressing / Tear-off label

100% Organic Cotton (White/
Heather Grey Melange: 92% Organic
Cotton, 8% Viscose) / Interlock /
200gsm

Sizes (Months):
3-6, 6-12, 12-18

WHITE / HEATHER GREY
MELANGE



certified by Control Union
certification CU811271



WHITE / HEATHER GREY MELANGE



WHITE / NAUTICAL NAVY



ORGANIC NATURAL / MOCHA



BZ41 BABY BASEBALL PLAYSUIT WITH ORGANIC COTTON

Contrast red poppers at neck and leg opening / Short leg length / Comfort side seams / Red taping along inside back neck / Tear-off label

100% Organic Cotton (White/Heather Grey Melange/Red: 94% Organic Cotton, 6% Polyester) / Interlock / 200gsm

Sizes (Months):

3-6, 6-12, 12-18



**WHITE / HEATHER GREY
MELANGE / RED**



WHITE / NAVY / RED



WHITE / HEATHER GREY
MELANGE / RED



certified by Control Union
certification CU811271



BZ13 BABY ROMPASUIT

Soft and stretchy fabric / Envelope neckline
/ Binding at sleeve and leg ends for shape
retention / Self-coloured poppers between legs

100% Cotton (Heather Grey Melange: 85% Cotton,
15% Polyester) / Interlock / 200gsm

Sizes (Months):
3-6, 6-12, 12-18



WHITE



POWDER PINK



HEATHER GREY
MELANGE



DUSTY BLUE



NAUTICAL NAVY



BLACK

BZ13S BABY STRIPY ROMPASUIT

Yarn dyed stripes / Soft and stretchy fabric / Envelope neckline / Binding at sleeve and leg ends for shape retention / Self-coloured poppers between legs

100% Cotton / Interlock / 200gsm

Sizes (Months):

3-6, 6-12, 12-18



RED / WASHED WHITE



NAVY / WASHED WHITE





BZ35 BABY ENVELOPE SLEEPSUIT WITH SCRATCH MITTS

ORGANIC COTTON

Envelope neckline / Scratch mitts which can be folded or unfolded as wanted /
Integral feet / Self coloured poppers at leg opening / Tear-off label

100% Organic Cotton / Interlock / 200gsm

Sizes (Months):

0-3, 3-6, 6-12



certified by Control Union
certification CU811271



WHITE



ORGANIC NATURAL

BZ05-TLC BABY KIMONO BODYSUIT

ORGANIC COTTON

Stylish wrap front bodysuit / Soft and
stretchy fabric / Self-coloured poppers at
front and at crotch / Raglan sleeves

100% Organic Cotton / Interlock / 200gsm

Sizes (Months):

0-3, 3-6, 6-12

WHITE



ORGANIC NATURAL



certified by Control Union
certification CU811271



BZ24 BABY HOODED BLANKET

ORGANIC COTTON

Single layer blanket / Binding around edges for shape retention /
Triangular hood at corner / Tear-off label

100% Organic Cotton / Interlock / 200gsm

ONE SIZE



WHITE / WHITE



certified by Control Union
certification CU811271



COLOUR MY WORLD

BZ02 BABY T

Soft and stretchy fabric / 2 self-coloured poppers at side neck / Cover seam at hems / 1x1 rib neck

100% Cotton: Bubble Gum Pink, Dusty Blue, Mint, Nautical Navy, Orange, Powder Pink, Red & Soft Yellow

100% Organic Cotton: Black, Camouflage Green, Cobalt Blue, Fuchsia, Kelly Green, Organic Natural, Surf Blue & White

85% Organic Cotton, 15% Polyester: Heather Grey Melange

60% Organic Cotton, 40% Polyester: Mocha, Charcoal Grey Melange & Heather Blue

Interlock/ 200gsm

Sizes (Months):

0-3, 3-6, 6-12, 12-18, 18-24

ALL 100% ORGANIC COTTON
SHADES



certified by Control Union
certification CU811271

HEATHER GREY MELANGE,
MOCHA, CHARCOAL GREY
MELANGE & HEATHER
BLUE





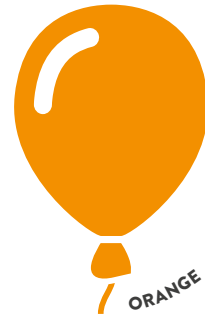
SOFT YELLOW



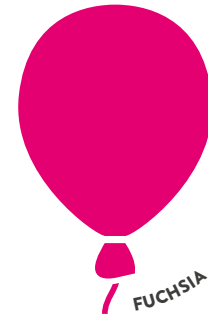
POWDER PINK



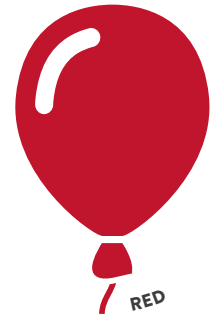
BUBBLE GUM PINK



ORANGE



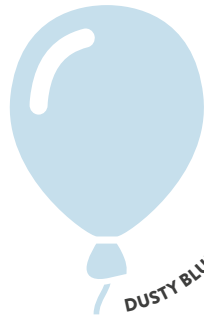
FUCHSIA



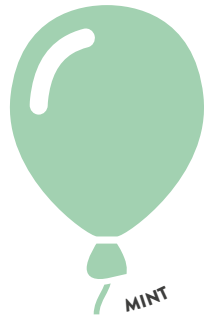
RED



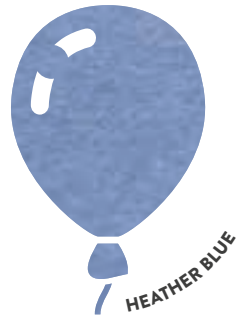
WHITE



DUSTY BLUE



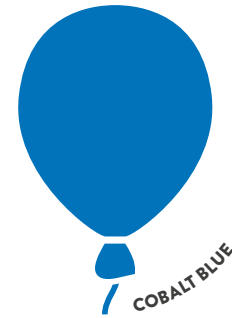
MINT



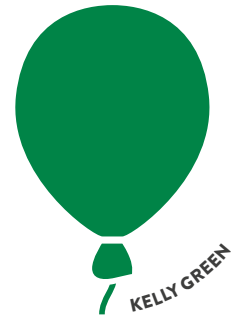
HEATHER BLUE



SURF BLUE



COBALT BLUE



KELLY GREEN



ORGANIC NATURAL



MOCHA



HEATHER GREY MELANGE



CAMOUFLAGE GREEN



CHARCOAL GREY MELANGE



NAUTICAL NAVY



BLACK ORGANIC



100% COTTON



CONTAINS ORGANIC COTTON



100% ORGANIC COTTON



BZ02S BABY STRIPY T

Soft and stretchy fabric / Yarn dyed stripes /
2 silver coloured poppers at side neck / Cover
seam at hem / 1x1 rib neck / Tear-off label

100% Cotton / Interlock / 200gsm

Sizes (Months):
3-6, 6-12, 12-18, 18-24



RED / WASHED WHITE



NAVY / WASHED WHITE





BZ45 BABY STRIPED T WITH ORGANIC COTTON

Narrow, yarn-dyed striped fabric / 2 tonal poppers at side of neck / Striped neck binding / Twin needle hem / Tear-off label

100% Organic Cotton (White/Heather Grey Melange: 92% Organic Cotton, 8% Viscose) / Interlock / 200gsm

Sizes (Months):

3-6, 6-12, 12-18



ORGANIC NATURAL / MOCHA



WHITE / HEATHER GREY MELANGE



WHITE / NAUTICAL NAVY

ORGANIC NATURAL / MOCHA &
WHITE / NAUTICAL NAVY



certified by Control Union
certification CU811271

WHITE /
HEATHER GREY
MELANGE







BZ52 BABY BRETON TOP

NEW

ORGANIC COTTON

Long sleeves / Side vents / Longer at back /
Yarn-dyed stripes / Tear-off label

100% Organic Cotton / Interlock / 200gsm

Sizes (Months):

3-6, 6-12, 12-18, 18-24



WHITE / NAVY



certified by Control Union
certification CU811271

BZ11 BABY LONG SLEEVE T

Soft and stretchy fabric / 2 self-coloured poppers at side neck / Cover stitch at hem and sleeve ends

100% Cotton (Heather Grey Melange: 85% Organic Cotton, 15% Viscose) / Interlock / 200gsm

Sizes (Months):

3-6, 6-12, 12-18, 18-24

-  WHITE
-  BLACK
-  RED
-  DUSTY BLUE
-  POWDER PINK
-  BUBBLE GUM PINK
-  NAUTICAL NAVY
-  HEATHER GREY MELANGE **NEW**

HEATHER GREY MELANGE



certified by Control Union
certification CU811271



BZ38 BABY STRIPY LONG SLEEVE T

Contrast elbow patches and neckline / Envelope neck / Yarn-dyed stripes / Soft and stretchy fabric / Tear-off label

100% Cotton (Red/Washed White/Navy: 100% Organic Cotton) / Interlock / 200gsm

Sizes (Months):

6-12, 12-18, 18-24

RED/ WASHED WHITE/ NAVY



RED/ WASHED
WHITE/ NAVY **NEW**



NAVY / WASHED
WHITE / RED



certified by Control Union
certification CU811271



BZ43 BABY SUPERSTAR BASEBALL T ORGANIC COTTON

Curved hem / Long sleeves / Soft, peach-feel fabric / Contrast stitching along hem edge / Taped back neck / Tear-off label

100% Organic Cotton / Peach Finish Single Jersey/ 150gsm

Sizes (Months):

6-12, 12-18, 18-24



**WASHED WHITE /
SWISS NAVY**



**WASHED WHITE /
WARM RED**



certified by Control Union
certification CU811271

NEW BABY ROCKS DENIM COLLECTION

Crafted from 100% organic cotton that's kinder to young skins, the new Baby Rocks collection combines style with softness, and fabulous detail with a determination to help protect the world for future generations to enjoy. We've developed the range to offer optimum decoration and personalisation potential; from the panel-free back of the jacket, the centre-seam free dungarees and trousers, with tear-off labelling as standard throughout. We hope you love it as much as we've enjoyed creating it.





BZ53 BABY ROCKS DENIM JACKET NEW
ORGANIC COTTON DENIM

Matt, silver-coloured nickel free poppers / Front flaps pocket tabs
/ Orange, jeans-style stitching detail / Plain back for increased
decoration potential / Cuffs / Tabs at back waistband / Mock panelling
at front / Tear-off label

100% Organic Cotton Denim / 9oz (300gsm)

Sizes (Months):

3-6, 6-12, 12-18, 18-24, (YEARS) 2-3



DENIM BLUE



certified by
Control Union
certification
CU811271



**BZ55 BABY ROCKS DENIM
BANDANA BIB NEW**
ORGANIC COTTON DENIM

Triangular bib / Adjustable poppers at back neck
/ Single layer / Denim binding at edge / Tear-off
Label

100% Organic Cotton Denim / 9oz (300gsm)

Size:

ONE SIZE



DENIM BLUE



certified by
Control Union
certification
CUB11271



BZ54 BABY ROCKS DENIM TROUSERS NEW
ORGANIC COTTON DENIM

Elasticated waist / No centre front or back seam / Mock pocket and fly / Orange
stitching detail throughout / Plain hems which can be rolled up to suit / Looser fit
/ Tear off Label

100% Organic Cotton Denim / 9oz (300gsm)

Sizes (Months):

3-6, 6-12, 12-18, 18-24, (YEARS) 2-3



DENIM BLUE



certified by
Control Union
certification
CUB11271



BZ56 BABY ROCKS DENIM DUNGAREES **NEW**

ORGANIC COTTON DENIM

Bib front dungarees with adjustable poppers / Orange, jeans style stitching throughout / Waist opening with poppers for ease of dressing / No centre front or back seam for decoration potential / Straight hems which can be rolled up / Tear-off Label

100% Organic Cotton Denim / 9oz (300gsm)

Sizes (Months):
3-6, 6-12, 12-18, 18-24

 **DENIM BLUE**



BZ47 BABY STRIPED HOODED T WITH ORGANIC COTTON

Mock draw cords at hood / Narrow, yarn-dyed stripes / 5 tonal poppers down front / 3-piece, double layer hood / Straight hem with side vents / Taped back neck / Half-moon back neck locker patch / Tear-off label

100% Organic Cotton (White/Heather Grey Melange: 92% Organic Cotton, 8% Viscose) / Interlock / 200gsm

Sizes (Months):
3-6, 6-12, 12-18



**WHITE / HEATHER
GREY MELANGE**



WHITE / NAUTICAL NAVY

WHITE / NAUTICAL NAVY



certified by Control Union
certification CU811271

WHITE /
HEATHER GREY
MELANGE



BZ46 BABY STRIPED LEGGINGS WITH ORGANIC COTTON

Narrow, yarn-dyed stripes /
Slight drop-crotch styling /
Gently elasticated waist / No
centre seams for decoration
potential / Gusset for ease of
movement / Tear-off label

100% Organic Cotton (White/
Heather Grey Melange: 92%
Organic Cotton, 8% Viscose) /
Interlock / 200gsm

Sizes (Months):
3-6, 6-12, 12-18



**WHITE / HEATHER
GREY MELANGE**



**WHITE / NAUTICAL
NAVY**

WHITE / NAUTICAL NAVY



certified by Control Union
certification CU811271

WHITE /
HEATHER GREY
MELANGE



BZ49 BABY LEGGINGS WITH ORGANIC COTTON

Slight drop-crotch styling / Gently
elasticated waist / No centre seams for
decoration potential / Gusset for ease of
movement / Tear-off label

100% Organic Cotton (Heather Grey
Melange: 85% Organic Cotton, 15%
Viscose) / Interlock / 200gsm

Sizes (Months):
3-6, 6-12, 12-18. 18-24

Sizes (Years):
2-3



BLACK NEW



WHITE



NAUTICAL NAVY



**HEATHER GREY
MELANGE**

WHITE, NAUTICAL NAVY, BLACK



certified by Control Union
certification CU811271

HEATHER GREY
MELANGE



BZ31 BABY SWEATSHIRT

Flat seam X at front neck / 1x1 rib neck and comfort cuffs / 2 self-coloured poppers at side neck / Drop tail with side vents / Inside self-fabric locker patch / Tear-off label

80% Cotton, 20% Polyester (Heather Grey Melange: 84% Cotton, 16% Polyester) / French Terry / 280gsm

Sizes (Months):
6-12, 12-18, 18-24

-  BLACK
-  BUBBLE GUM PINK
-  NAUTICAL NAVY
-  HEATHER GREY MELANGE



BZ33 BABY SWEATPANTS

Comfort waistband with natural coloured mock drawcords / Extra long cuffs for adjustable length / Front and back seam free for increased decoration potential / Brushed inner / Flat seams for comfort / Tear-off label

80% Cotton, 20% Polyester (Heather Grey Melange: 84% Cotton, 16% Polyester) / Brush Back Fleece / 250gsm

Sizes (Months):
6-12, 12-18, 18-24

Sizes (Years):
2-3

-  WHITE **NEW**
-  BLACK
-  BUBBLE GUM PINK
-  NAUTICAL NAVY
-  HEATHER GREY MELANGE



BZ32 BABY HOODIE

Single layer 3 piece hood / Kangaroo pockets with extended stitch detail / Straight hem with drop tail / Natural herringbone tape at inside neck and side vents / Straight cuffs / Brushed inner / Mock natural-coloured drawcord detail on side hood / Tear-off label

80% Cotton, 20% Polyester (Heather Grey Melange: 84% Cotton, 16% Polyester) / Brush Back Fleece / 250gsm

Sizes (Months):

6-12, 12-18, 18-24

Sizes (Years):

2-3

 **WHITE** NEW

 **BLACK**

 **BUBBLE GUM PINK**

 **NAUTICAL NAVY**

 **HEATHER GREY
MELANGE**

BZ40 BABY BOMBER JACKET

WITH ORGANIC COTTON

Antique brass effect poppers / Front welt pockets /
Rib at neck, hem and cuffs / Self fabric back neck locker
patch / Natural herringbone tape along inside neck /
Loop back fabric/ Tear-off label

Black: 80% Organic Cotton, 20% Recycled Polyester (rPET);
Heather Grey Melange: 85% Organic Cotton, 8% rPET,
7% Viscose / French Terry / 280gsm

Sizes (Months):

6-12, 12-18, 18-24

Sizes (Years):

2-3



BLACK



**HEATHER GREY
MELANGE**



certified by
Control Union
certification
CU811271





BZ25 BABY ALL-IN-ONE

Brushed inner / Extra-long cuffs at sleeve and legs which can be folded back for improved fit / Flat comfort seams / Seam-free at back for optimum decoration potential / 3-piece single layer hood / Kangaroo pocket / Zip front with comfort tab / Tear-off label

80% Cotton, 20% Polyester (Heather Grey Melange: 84% Cotton, 16% Polyester) / Brush Back Fleece / 250gsm

Sizes (Months):

6-12, 12-18, 18-24

Sizes (Years):

2-3

-  **BUBBLE GUM PINK**
-  **VANILLA**
-  **RED**
-  **HEATHER GREY MELANGE**
-  **NAUTICAL NAVY**
-  **BLACK**



1

BZ01-TLC BABY HAT

ORGANIC COTTON

Soft and stretchy fabric / Deep, double layered band for comfort and fit / Twin knot or can knot 2 ties together

100% Organic Cotton / Interlock / 200gsm

Sizes:

ONE SIZE



certified by Control Union
certification CU811271



2

BZ12 BABY BIB

Double layer / Hook and loop fastening at back neck / Binding at edges for shape retention

100% Cotton (Heather Grey Melange: 85% Cotton, 15% Polyester) / Interlock / 200gsm

Sizes:

ONE SIZE



3

BZ15 BABY 1 KNOT HAT

Soft and stretchy fabric / Deep, double layered comfort band / Single knot

100% Cotton (Heather Grey Melange: 85% Cotton, 15% Polyester; Organic Natural: 100% Organic Cotton) / Interlock / 200gsm

Sizes:

ONE SIZE



certified by Control Union
certification CU811271



4

BZ15S BABY STRIPY 1 KNOT HAT

Yarn-dyed stripe / Soft and stretchy fabric / Deep, double layered comfort band / Single knot

100% Cotton (Light Grey Melange/ White: 97% Cotton, 3% Viscose) / Interlock / 200gsm

Sizes:

ONE SIZE



5

BZ16 BABY BIB WITH TIES

Single layer bib with ties at back neck / Binding around edges in self-coloured or contrast colour

100% Cotton (White, Organic Natural & Black: 100% Organic Cotton) / Interlock / 200gsm

Sizes:

ONE SIZE



certified by Control Union
certification CU811271



6

BZ23 BANDANA BIB

Reversible bib / Double-position pop fasteners at back neck / Contrast binding at edge for shape retention / Tear-off label

100% Cotton (White/Heather Grey Melange: 98% Cotton, 2% Polyester; White/Black: 100% Organic Cotton) / Interlock / 200gsm

Sizes:

ONE SIZE



WHITE / RED



WHITE / POWDER PINK



WHITE / HEATHER GREY MELANGE



WHITE / NAUTICAL NAVY



WHITE / BLACK **NEW**



WHITE/BLACK



certified by Control Union
certification CU811271



7

BZ44 REVERSIBLE SLOUCH HAT

WITH ORGANIC COTTON

Extra-long so can be worn as slouch hat or folded back / Soft and stretchy fabric / Tear-off label

100% Organic Cotton (White/Heather Grey Melange: 93% Organic Cotton, 7% Polyester) / Interlock / 200gsm



WHITE/HEATHER GREY MELANGE

Sizes:

ONE SIZE



WHITE / HEATHER GREY MELANGE



WHITE / NAUTICAL NAVY



WHITE / RED



certified by Control Union
certification CU811271



8

BZ55 BABY ROCKS DENIM BANDANA BIB **NEW**

ORGANIC COTTON DENIM

Triangular bib / Adjustable poppers at back neck / Single layer / Denim binding at edge / Tear-off Label

100% Organic Cotton Denim / 9oz (300gsm)

Sizes:

ONE SIZE



DENIM BLUE



certified by Control Union
certification CU811271



9

BZ51 LITTLE HAT WITH EARS **NEW**

WITH ORGANIC COTTON

Narrow, yarn dyed stripes / 2 ears / Wide, double layered band for comfort / Tear-off label

100% Organic Cotton (White/Heather Grey Melange: 92% Organic Cotton, 8% Viscose) / Interlock / 200gsm

Sizes:

ONE SIZE



ORGANIC NATURAL / MOCHA



WHITE / HEATHER GREY MELANGE



WHITE / NAUTICAL NAVY

WHITE/HEATHER GREY MELANGE



certified by Control Union
certification CU811271

mantis
KIDS

mantis
MINI





HM109S KIDS STRIPY T

Yarn dyed striped jersey fabric / 1x1 rib at neck /
Twin needle stitching at hem and sleeve ends

100% Cotton / Single Jersey / 150gsm

Sizes (Years/Height):
2-3/92-98CM, 4-5/104-110CM, 6-7/116-122CM

BLACK	WHITE
CLASSIC BLUE	WHITE





HM15 KIDS SUPERSOFT T

Unisex classic fit T / Fashionable contrast taping at back neck / 1x1 rib neckline / Twin needle hem and sleeve ends

100% Cotton (Heather Grey Melange: 85% Cotton, 15% Polyester; Nautical Navy Red & White 100% Organic Cotton) / Single Jersey / 130gsm

Sizes (Years/Height):

2-3/92-98CM, 4-5/104-110CM, 6-7/116-122CM

NAUTICAL NAVY, RED
& WHITE



certified by Control Union
certification CU811271



BLACK / HEATHER GREY TAPE
COBALT BLUE / NAVY TAPE
HEATHER GREY MELANGE / RED TAPE
NAUTICAL NAVY / NATURAL TAPE
RED / NAVY TAPE
WASHED NAVY / RED TAPE
WASHED WHITE / RED TAPE
WHITE / NATURAL TAPE

MK15 KIDS SUPERSOFT T

Unisex classic fit T / Fashionable contrast taping at back neck / Narrow rib at neck/ Twin needle hem and sleeve ends

100% Cotton (Heather Grey Melange: 85% Cotton, 15% Polyester; Nautical Navy Red & White 100% Organic Cotton) / Single Jersey / 130gsm

Sizes (Years / Height) :

8-9 / 128-134CM, 10-12 / 140-152CM, 12+ / 158-164CM

NAUTICAL NAVY, RED
& WHITE



certified by Control Union
certification CU811271



BLACK / HEATHER GREY TAPE
COBALT BLUE / NAVY TAPE
NAUTICAL NAVY / NATURAL TAPE
RED / NAVY TAPE
WASHED NAVY / RED TAPE
WASHED WHITE / RED TAPE
WHITE / NATURAL TAPE



HM84 MINI BRETON TOP **NEW**

ORGANIC COTTON

Long Sleeves / Side vents / Longer at back / Yarn Dyed Stripes / Tear-off Label

100% Organic Cotton / Interlock / 200gsm

Sizes (Years / Height) :

2-3/92-98CM, 4-5/104-110CM, 6-7/116-122CM



certified by Control Union
certification CU811271

WHITE

NAVY

MK84 KIDS BRETON TOP **NEW**

ORGANIC COTTON

Long Sleeves / Side vents / Longer at back / Yarn Dyed Stripes / Tear-off Label

100% Organic Cotton / Interlock / 200gsm

Sizes (Years / Height) :

8-9 / 128-134CM, 10-12 / 140-152CM, 12+ / 158-164CM



certified by Control Union
certification CU811271

WHITE

NAVY



HM80 GIRLS T

Modern fit girls T / Curved hem / Slightly wider neckline /
Twin needle hem and sleeve ends / Tear-off label

100% Cotton / Single Jersey / 150gsm

Sizes (Years / Height):

2-3/92-98CM, 4-5/104-110CM, 6-7/116-122CM

TURQUOISE
FUCHSIA
LAVENDER
WHITE



MK80 GIRLS T

Modern fit girls T / Curved hem / Slightly wider neckline /
Twin needle hem and sleeve ends / Tear-off label

100% Cotton / Single Jersey / 150gsm

Sizes (Years / Height):

8-9 /128-134CM, 10-12 / 140-152CM, 12+ / 158-164CM

TURQUOISE
FUCHSIA
BLACK
WHITE



HM81 GIRLS RACERBACK TANK VEST

Racerback styling / Curved hem / Binding at neck and armholes for durability / Tear-off label

100% Cotton / Single Jersey / 150gsm

Sizes (Years/Height):

2-3/92-98CM, 4-5/104-110CM, 6-7/116-122CM

TURQUOISE
FUCHSIA
WHITE

MK81 GIRLS RACERBACK TANK VEST

Racerback styling / Curved hem / Binding at neck and armholes for durability / Tear-off label

100% Cotton / Single Jersey / 150gsm

Sizes (Years/Height):

8-9 / 128-134CM, 10-12 / 140-152CM, 12+ / 158-164CM

TURQUOISE
FUCHSIA
BLACK
WHITE





HM16 KIDS SUPERSTAR BASEBALL T

Modern, unisex fit / Soft-handle peach finish fabric / Curved raglan seams / Curved hem with contrast overlock edge / Tear-off label

100% Cotton (Heather Grey Melange/Swiss Navy:
90% Cotton, 10% Viscose) / Peach Finish Single
Jersey / 150gsm

Sizes (Years / Height):

2-3/92-98CM, 4-5/104-110CM, 6-7/116-122CM

HEATHER GREY MELANGE	SWISS NAVY
WASHED WHITE	SWISS NAVY
WASHED WHITE	WARM RED

MK16 KIDS SUPERSTAR BASEBALL T

100% Cotton (Heather Grey Melange/Swiss Navy:
90% Cotton, 10% Viscose) / Peach Finish Single
Jersey / 150gsm

100% Cotton (Heather Grey Melange / Swiss Navy : 90%
Cotton, 10% Viscose) / Peach Finish Single Jersey / 150gsm

Sizes (Years / Height):

8-9 / 128-134CM, 10-12 / 140-152CM, 12+ / 158-164CM

HEATHER GREY MELANGE	SWISS NAVY
WASHED WHITE	SWISS NAVY
WASHED WHITE	WARM RED





HM46 KIDS LONG SLEEVE RAGLAN T

Raglan sleeve for ease of movement / Soft 1x1 rib at neck
/ Taped back neck for durability / Cover seam detailing

100% Cotton (Heather Grey Melange: 85% Cotton,
15% Polyester) / Single Jersey / 150gsm

Sizes (Years/Height):

2-3/92-98CM, 4-5/104-110CM, 6-7/116-122CM

BLACK

NAUTICAL NAVY

HEATHER GREY MELANGE

WHITE

BABYBUGZ

INDEX Green text - Features Organic Cotton



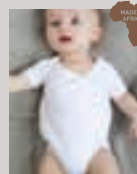
BZ01-TLC
p30



BZ02
p13



BZ02S
p14



BZ05-TLC
p10



BZ10
p02



BZ10S
p04



BZ11
p18



BZ12
p30



BZ13
p08



BZ13S
p09



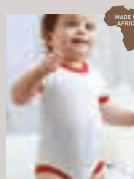
BZ15
p30



BZ15S
p30



BZ16
p30



BZ19
p04



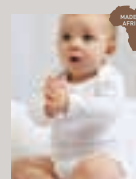
BZ23
p31



BZ24
p11



BZ25
p29



BZ30
p5



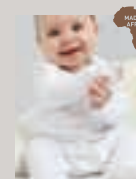
BZ31
p26



BZ32
p27



BZ33
p26



BZ35
p10



BZ38
p18



BZ40
p28



BZ41
p07



BZ43
p19



BZ44
p31



BZ45
p15



BZ46
p25



BZ47
p24



BZ48
p06



BZ49
p25



BZ51
p31



BZ52
p17



BZ53
p21



BZ54
p22



BZ55
p22



BZ56
p23



HM15
p34



HM16
p38



HM46
p39



HM80
p36



MK15
p34



MK16
p38



MK80
p36



HM81
p37



HM84
p35



HM109S
p33



MK81
p37



MK84
p35

mantis
MINI

mantis
KIDS



BABYBUGZ

mantis
MINI

mantis
KIDS